

2010 Pilatus PC12/47E

MSN 1204 – F-HLRV



AeroBuyNow 
AIRCRAFT BROKERAGE

2010 PILATUS PC12 / 47E MSN 1204 - F-HLRV

TOTAL TIME

2,757 TSN 2,224 CSN (as of May 2024)

ENGINE

Pratt & Whitney Canada PT6A-67P s/n PCE-RY0220

2,757 TSN 2,174 CSN

PROPELLER

Hartzell HC-E5A-3A s/n SA125 - Five Blade Swept

Next OH due in 3,150:06Hours or in September 2028

AVIONICS

Honeywell Primus Apex Elite

COM Dual Honeywell KTR2280
XPDR Dual Honeywell KXP2290 Mode S
FMS Honeywell KMC9220
GPS Dual Honeywell KGS200
TCAS/TAWS Honeywell KMH920 TCAS 1 & Class B
ADF Honeywell KA44B
DME Honeywell KN63
Radar Honeywell ART2000
Radalt Honeywell KRA405B
Stormscope BFGoodrich WX500
ELT Kannad 406Mhz w/ Nav Interface

EXTERIOR

Titanium Gray w/ Phantom Gray, Rubyred and Snow-White Stripes

INTERIOR

6 + 2 Pax Platinum Executive in AeroNappa Acadian Leather
Twine Carpet
French Vanilla Headliner and Upper Sidewall
Mocha Lower Sidewall
FWD 4 Place Club - Aft 2 Place Club - Aft 2 Optional Seats
FWD Galley w/Lavatory
FWD & Aft Foldout Tables
1 cockpit + 3 Cabin 110 VAC Outlets
PC12/47E Entertainment System (DVD & Audio)

OPTIONS

ADS-B Out
RVSM - VNAV/WAAS/LPV
Copilot PFD
Copilot Audio/MKR Panel
Electronic Checklist
Cursor Control Device
Pilot/Copilot Map Holder
Additional Air Conditioning
77.1 CuFt O2 Bottle
Iridium Satcom
Antenna & Port
Honeywell Apex SmartView Synthetic Vision
Wireless Connected Flight Deck
Honeywell Chartlink
LH & RH Pulsing Recognition Lights
Parker/Hannifin Main Wheels & Brakes

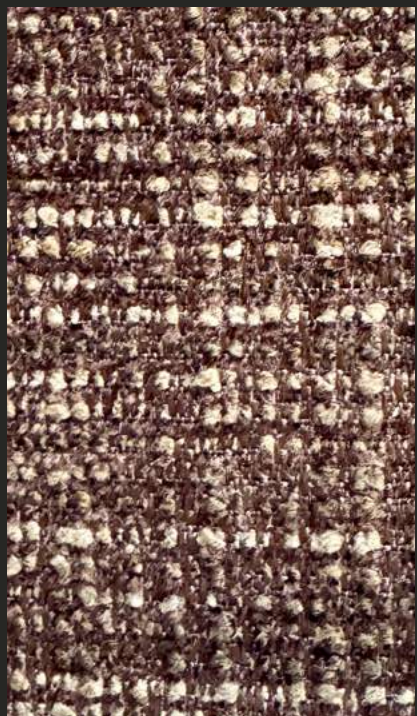
REMARKS

Always Hangared
All Logs Since New
No Damage History

PRICE : US\$ 3,995,000.00 + VAT If Applicable

The above aircraft is offered for sale subject to prior sale, withdrawal from the market and verification of specifications.

2010 PILATUS PC12 / 47E MSN 1204 - F-HLRV



2010 PILATUS PC12 / 47E MSN 1204 - F-HLRV





2010 PILATUS PC12 / 47E MSN 1204 - F-HLRV



2010 PILATUS PC12 / 47E MSN 1204 - F-HLRV





2010 PILATUS PC12 / 47E MSN 1204 - F-HLRV











2010 PILATUS PC12 / 47E MSN 1204 - F-HLRV



2010 PILATUS PC12 / 47E MSN 1204 - F-HLRV



2010 PILATUS PC12 / 47E MSN 1204 - F-HLRV



2010 PILATUS PC12 / 47E MSN 1204 - F-HLRV



2010 PILATUS PC12 / 47E MSN 1204 - F-HLRV



2010 PILATUS PC12 / 47E MSN 1204 - F-HLRV



2010 PILATUS PC12 / 47E MSN 1204 - F-HLRV



2010 PILATUS PC12 / 47E MSN 1204 - F-HLRV



2010 PILATUS PC12 / 47E MSN 1204 - F-HLRV



2010 PILATUS PC12 / 47E MSN 1204 - F-HLRV



2010 PILATUS PC12 / 47E MSN 1204 - F-HLRV



2010 PILATUS PC12 / 47E MSN 1204 - F-HLRV





2010 PILATUS PC12 / 47E MSN 1204 - F-HLRV



2010 PILATUS PC12 / 47E MSN 1204 - F-HLRV





2010 PILATUS PC12 / 47E MSN 1204 - F-HLRV





2010 PILATUS PC12 / 47E MSN 1204 - F-HLRV



2010 PILATUS PC12 / 47E MSN 1204 - F-HLRV



2010 PILATUS PC12 / 47E MSN 1204 - F-HLRV



2010 PILATUS PC12 / 47E MSN 1204 - F-HLRV



Contact Us For This Market Best Buy



mathieu.pezin@aerobuynow.com
+ 33 7 8426 5143

AeroBuyNow SARL
8 Rue Bellevue
Le Westmacott
98000 Monaco

+377 9990 1270
www.aerobuynow.com